

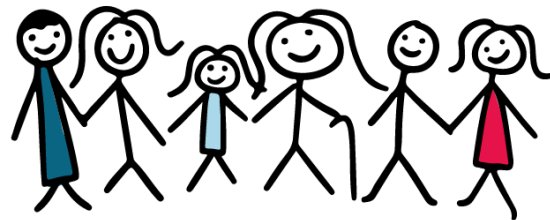
Foundation for Lutheran Child and Family Services

February 1, 2023

Meet Syrentha!

As the Pando Coordinator what do you do?

As the Pando Program Coordinator, I enlighten and educate our tenants about resources available to them. I collaborate and partner with other organizations in the community such as the Office Of Public Health and Safety and the IMPD. These partnerships form an alliance for the tenants and the betterment of their lives. Out of these alliances trainings and information is offered to help with seeking jobs, going to school, nutrition, and self-preservation.



Tell us a little bit about yourself!

I have worked in social services for twenty years. I have learned firsthand about trauma, mental illness, homelessness, drug addiction and more. I have always worked in a capacity that helps other human beings. My work over the years has also been educational for me. Every client, patient, or consumer I have worked with taught me something also. They collectively taught me to appreciate the journey.

