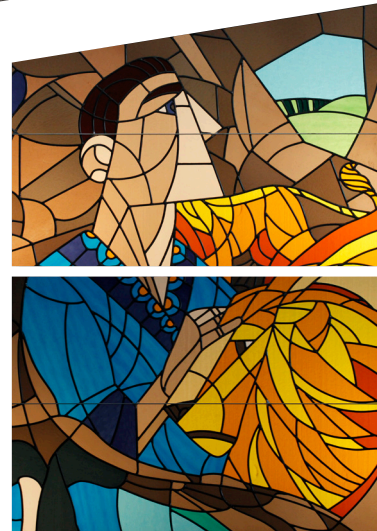
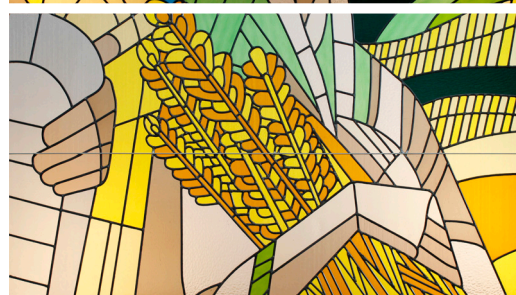
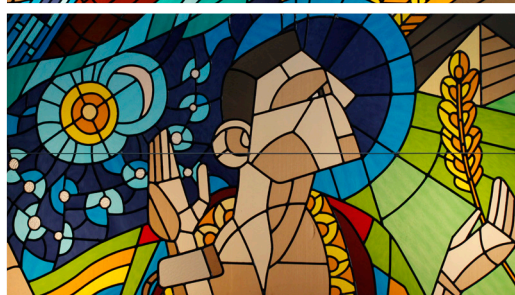




The Story in the Windows

The 6 west windows depict Old Testament stories looking toward Christ. The story begins with the Father's creation of the world, the Fall into sin, Noah's Ark, Joseph, the plagues of Egypt, Moses, Rahab and Jericho, Ruth, David, Daniel and Jonah. The 6 north windows reveal the Savior in the Christmas story, feeding of the 5,000, Jesus calming the storm, Jesus praying in the garden of Gethsemane, the Resurrected Christ and the gift of the Holy Spirit. These stories are foundational and impactful in the lives of our residents.





Making Stained Glass

- 1 The shapes are cut from sheets of colored (stained) glass
- 2 The cut pieces are laid out on the window pattern
- 3 The pieces on the pattern are finely ground to ensure a tight fit
- 4 The pieces are laid out again and are fit together with strips of lead
- 5 Once all the pieces are in place with lead separators, the joints are soldered
- 6 The window is then cemented with a compound that will seal the pieces
- 7 After the pieces are fully set, the window is buffed, cleaned, and installed



Engaging and Empowering Families and Community with **Love, Compassion, Faith, and Support.**

Stories can communicate powerful ideas across cultures. The Lutheran Child and Family Services story begins with two Lutheran churches in 1883 on the east side of Indianapolis, who decided to do something about the growing number of orphans in their community. As time passed, our organization has evolved to meet the needs of our community. In our work with at-risk youth and their families, we tell the history of God's love found in the Bible. God's story stands the test of time and informs our own. The one who is lost becomes the one who is found. In the art of our stained-glass windows, we share God's story of redemption, hope, love and salvation found in Christ. You are invited to visit and view what our children observe and see your own story within God's story.

1525 N. Ritter Ave. Indianapolis, IN 46219

317-359-5467

lutheranfamily.org

[f FoundationforLutheranChildandFamilyServices](https://www.facebook.com/FoundationforLutheranChildandFamilyServices)



Our Spiritual Engagement, Education and Development (SEED) program is focused on Christ-centered spiritual care to our residents and staff. Whether through chapel services, one on one conversations, or providing Bibles and visits from local church volunteers, SEED is the intersection of faith and mental health. If you would like to learn more about our SEED program please call or email seed@lutheranfamily.org



All windows were designed, fabricated, and installed by the Center for Liturgical Art, a program of Concordia University, Nebraska

liturgicalart.org

[f centerforliturgicalart](https://www.facebook.com/centerforliturgicalart)

[i liturgicalart](https://www.instagram.com/liturgicalart)



A History of Stained Glass

Stained-glass in places of worship can be traced back to the 7th century in Britain as one of the earliest forms of illustrated biblical narratives. As time passed, the art and purpose of stained glass has advanced to communicate theological truths in a more abstract form.

No matter the form, the purpose remains the same: to picture God's story so that all can find and grow in God's grace. Those who enter our chapel whether it be residents, staff, or visitors will see and know the unconditional love of Jesus when they survey the beautiful windows.