

# Who We Are

Pando Aspen Grove of Community Heights (Pando) is a 30-unit apartment complex with 1-bedroom units, community space, a food pantry, and offices onsite for supportive service providers. Participation in supportive services are voluntary and based on client-choice. Some of the services LCFS provides through Pando include helping clients gain access to health insurance and supplemental food programs, nutrition and cooking classes, legal aid, budgeting and financial management, case management and mental health services, employment/career planning, and access and connections to educational enhancement opportunities. Youth are referred to the program through the Indianapolis Coordinated Entry system, and preference is given to those who have been involved in the child welfare/foster care system.



## Contact Us

1525 N Ritter Ave  
Indianapolis, IN 46219  
(317) 359-5467

email address:

[info@lutheranfamily.org](mailto:info@lutheranfamily.org)

Pando Aspen Grove of Community Heights is a collaboration between The Foundation for LCFS, Lutheran Child and Family Services, TWG Development, and Community Health Network



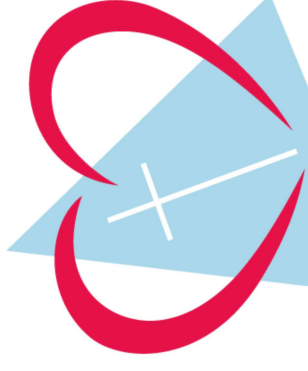
Community Partner



TWG  
DEVELOPMENT, LLC

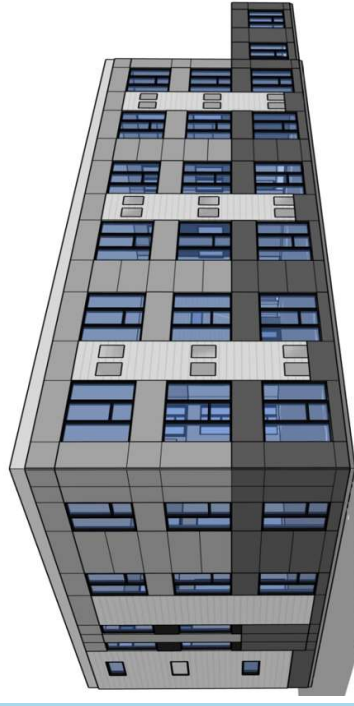


Community  
Health Network



THE FOUNDATION FOR

Lutheran  
Child & Family Services



PANDO ASPEN GROVE

OF COMMUNITY HEIGHTS

# Our Mission & Vision

---

” Engaging and Empowering Families and Community with Love, Compassion, Faith, and Support “



## HOUSING FIRST APPROACH

---

Pando provides a special focus to serve youth who have “aged out” of the foster care system. Operating with the “Housing First” approach, the program provides an array of voluntary supportive services to help young adults reach their education, employment, health, and community integration goals.

## FACILITY AMENITIES

---

Pando offer a Community Room, Computer Lab, Laundry Rooms, Supportive Services Offices, Food Pantry, Patio Areas, controlled access, and Video Security System

## THE PANDO PROJECT

---

The project is made possible by funding awards through the Indiana Housing and Community Development Authority (IHCDA). The Pando project received Low-Income Housing Tax Credits totaling over \$8.4 M and a grant from the Housing Trust fund of \$800,000, which are projected to fully cover the cost of construction.

” Our community will experience safety and stability, in an environment of respect, healing, and hope “

